

# HLC Series Linear Guide Parallel Hand

## Thin Design & Long Stroke via Linear Guide

### Key Features

#### ■ Thin body with long stroke

Thin design using 2 pistons to provide high torque

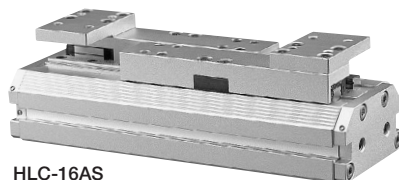
#### ■ Linear guide improved durability

Long guide pitch of the linear guide improves rigidity

#### ■ Various sizes available

6 sizes and 11 strokes available

#### ■ Through hole on the front for easy mounting



HLC-16AS

Hand  
(2-Jaw)

### How To Order

Standard ----- **HLC-08AS**

Option ----- **HLC - 12AS - L1 - ET3LS2**

HLC-12AS-L1 (HLC-12AS Long Stroke Type) with 2 of ET3 non-contact reed switches

Model		Size		Stroke		Sensor, Quantity			
Symbol	Name	Symbol		Symbol	Name	Symbol	Name	Symbol	Name
HLC	Normal	08AS	30AS	No symbol	Normal	ET3	Non-Contact 3-Lead	E24L <sup>*2</sup>	Contact 2-Lead
HLC-□□-L1 <sup>*1</sup>	Long Stroke Type	12AS		L1 <sup>*1</sup>	Long Stroke Type	ET3L	Non-Contact 3-Lead	E25 <sup>*2</sup>	Contact 2-Lead
		16AS				ET2	Non-Contact 2-Lead	E25L <sup>*2</sup>	Contact 2-Lead
		20AS				ET2L	Non-Contact 2-Lead	S1	1 Sensor
		25AS				E24 <sup>*2</sup>	Contact 2-Lead	S2	2 Sensors

<sup>\*1</sup> Except 08AS

<sup>\*2</sup> 30AS only

For sensor detail **▶277P**

### Specification

Model	HLC-08AS		HLC-12AS		HLC-16AS		HLC-20AS		HLC-25AS		HLC-30AS	
	For Layout Drawing <b>▶90P</b>		For Layout Drawing <b>▶90P</b>		For Layout Drawing <b>▶91P</b>		For Layout Drawing <b>▶91P</b>		For Layout Drawing <b>▶92P</b>		For Layout Drawing <b>▶92P</b>	
	Standard	Standard	L1	Standard	L1	Standard	L1	Standard	L1	Standard	L1	
Working Pressure	Pneumatic: 0.2 to 0.7MPa											
Lubrication	Not Required or Turbine Oil Class 1 (ISOVG32)											
Ambient Temperature (°C)	5 to 60											
Total Jaw Stroke (mm)	20	30	60	40	80	50	100	60	120	70	140	
Cylinder Diameter (mm)	dia.8×2		dia.12×2		dia.16×2		dia.20×2		dia.25×2		dia.30×2	
Internal Volume [Reciprocation] (cm <sup>3</sup> /time)	2.0	6.8	13.6	16.1	32.2	31.4	62.8	58.9	117.8	99.0	198.0	
Repeatability (mm)	±0.03											
Weight (kg)	0.14	0.29	0.44	0.71	0.85	1.03	1.40	1.62	2.23	2.74	3.69	