

50

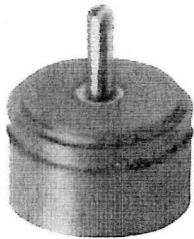
Singleturn Potentiometers

PL 310

∅ 22.22 mm

5'000'000 cycles

Conductive plastic



Application

- Switch board
- Speed control
- Instrumentation

Features

- Robust Housing
- Easily mounted
- High life expectancy
- Good Linearity

Options

- Linearity +/- 0.25%
- Special shaft
- Ball bearing
- Electrical angle in degrees between 15° and 348°
- Other mechanical angle in degrees between 45° and 360°
- Protection rating IP 65

Mechanical Data

Diameter	22.22 mm
Maximum Setting torque	0.7 cNm
Life expectancy	5'000'000 cycles

Electrical Data

Nominal resistance	1K/5K/10K Ω
Resistance tolerance	+/- 20 %
Linearity	+/- 1 %
Recommended wiper current	< 0.1 μA
Max. wiper curr. in case of malfunc.	10 mA
Power rating	0.5 W / 40°C
Maximum supply voltage	20 V with the 1K Ω/50 V with the 5K Ω and 70 V with the 10 K Ω
Temp. coefficient of voltage divider	20 ppm/°C
Dielectric strength	1000 VAC
Insulating resistance	10 G Ω

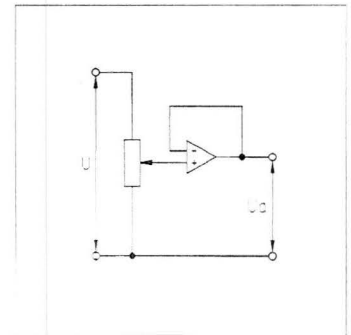
Environmental Conditions

Storage temperature range	-40°C... +105°C
Operating temperature range	-25°C ... +85°C
Climatic rating	25/085/56
Protection rating	IP 50
Vibration	10 G (Resistance change +/- 1 %)
Shock	50 G (Resistance change +/- 1 %)

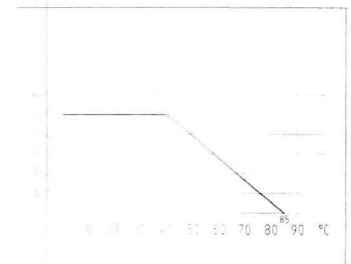
Material

Housing	anodized aluminium
Shaft	Steel inox
Connections	brass gold plated

Schematic recommended



De-rating curve





Order Example

Art.No.	Model	Resi. val./Ω	Shaft length
82061	PL 310-1A	10K	11.1 mm

All data given is subject to change without notice.

Model	PL 310-AA	PL 310-BA	PL 310-BB	PL 310-AA
Dimension drawing	A	B	B	C
Connecting diagram	1	1	1	1
Electrical angle in degrees	340°	340°	2 x 105°	44°
Mechanical angle in degrees	360° Cont. rotation	360° Cont. rotation	360° Cont. rotation	360° Cont. rotation
Order chart/ Resistance value in Ohm	Art.No.	Art.No.	Art.No.	Art.No.
1 K	82059	82079	82082	-
5 K	82060	82080	82083	82102
10 K	82061*	82081*	82084*	-

* popular stocked item

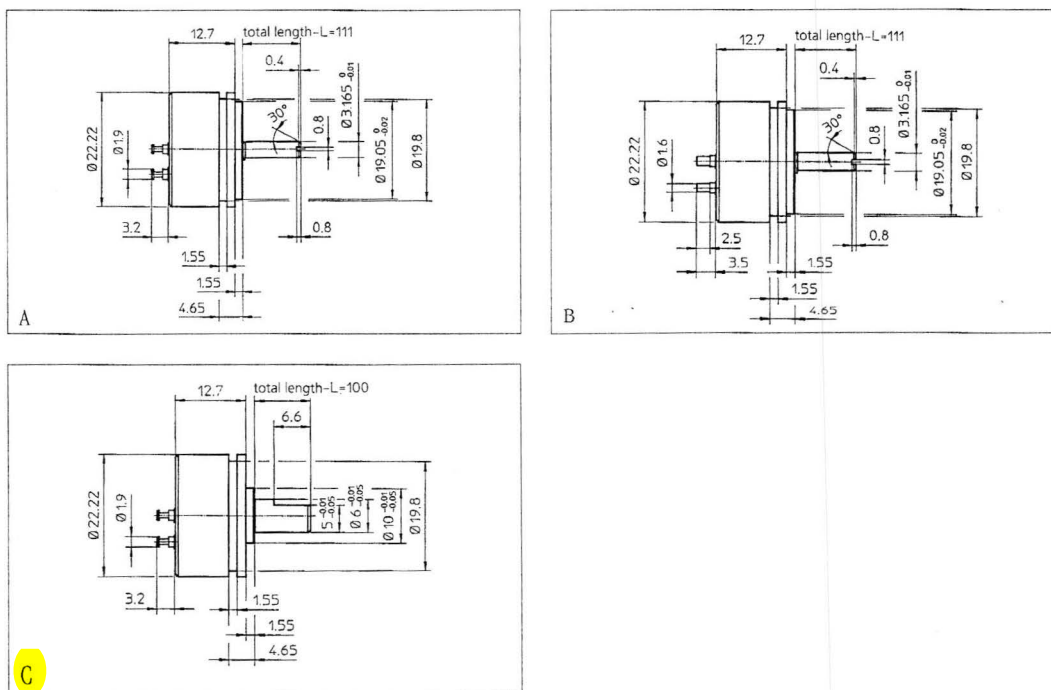
Marking/Remarks

Connections:	AA = head soldering
	BA = axial print
	BB = axial print/center tap

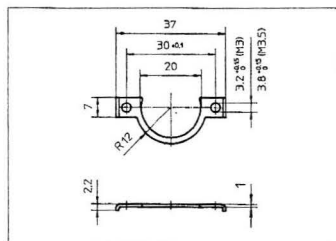
Connecting diagrams



Dimension drawings



Accessories



Art.No.	Model	Marking	Remarks
23293	PL 310	clamp	see drawing