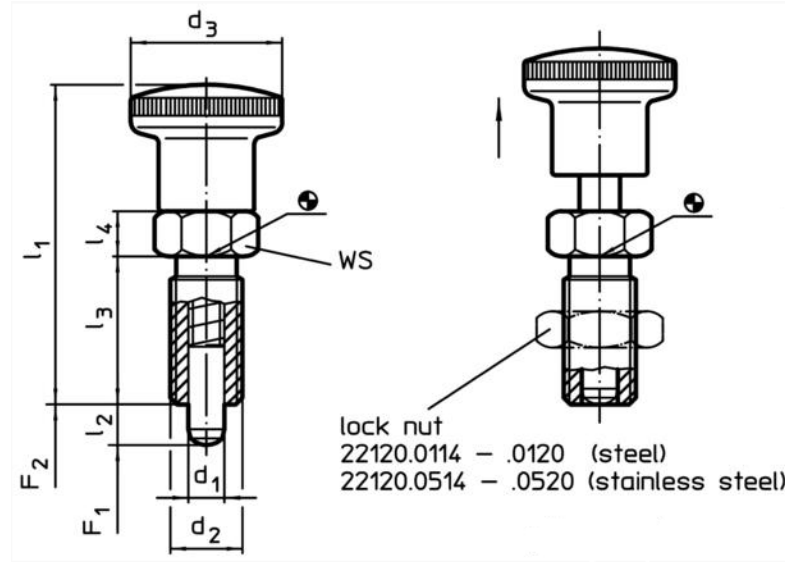


# ONLY FOR PROTOTYPE



Dimensions										WS	Spring load <sup>1)</sup>		Temperature		Art.-No.		
d <sub>1</sub>	l <sub>2</sub>	d <sub>2</sub>	d <sub>3</sub>	d <sub>4</sub>	d <sub>5</sub>	l <sub>1</sub>	l <sub>3</sub>	l <sub>4</sub>	l <sub>5</sub>	l <sub>6</sub>	F <sub>1</sub>	F <sub>2</sub>	min.	max.			
-0,02 -0,04	min.										[mm]	[N]	[°C]	[g]			
with knob – picture 1, Steel																	
12	15	M20 x 1,5	33	-	-	67,0	33	10	-	-	22	11,5	40,0	-30	80	128	22110.0116

<sup>1)</sup> statistical average value



Index plungers are used for indexing bores.

Types with / without lock have the same building height.

Due to a thread recess the index plungers can be completely screwed in.

### Material

#### Body

- Steel, blackened

#### Locking pin

- Steel, hardened

#### Knob

- Thermoplastic PA 6, black, dull

### Assembly

The screw length can be adapted by distance collars for index plungers (EH 22120.).

### Notes

Knob not removable.

Lock nuts have to be purchased separately.

Dimensions d <sub>2</sub> [mm]	Art.-No.
M20 x 1,5	22120.0120

lock nuts ISO 8675 (DIN 439) for the following sizes, Steel

**Approved supplier: HALDER**

Change of supplier or supplier specification is not Allowed without formal revision of this document.

Byte av leverantör eller leverantörsspecifikation är Inte tillåten utan formell ändring av detta dokument.

View	Designed By SFTDA	Approved By SFTLEO	Material Designation	Mass [kg]	Model
	ECN No. SFT180414		Surface Treatment	0.24	Internal
<b>DYNAPAC</b>	Date 180531		Description Locking pin		Scale 1:1
	No Of 0			State K0	Sheet of 1 (1)
				Rev. K0	No. 4812129239