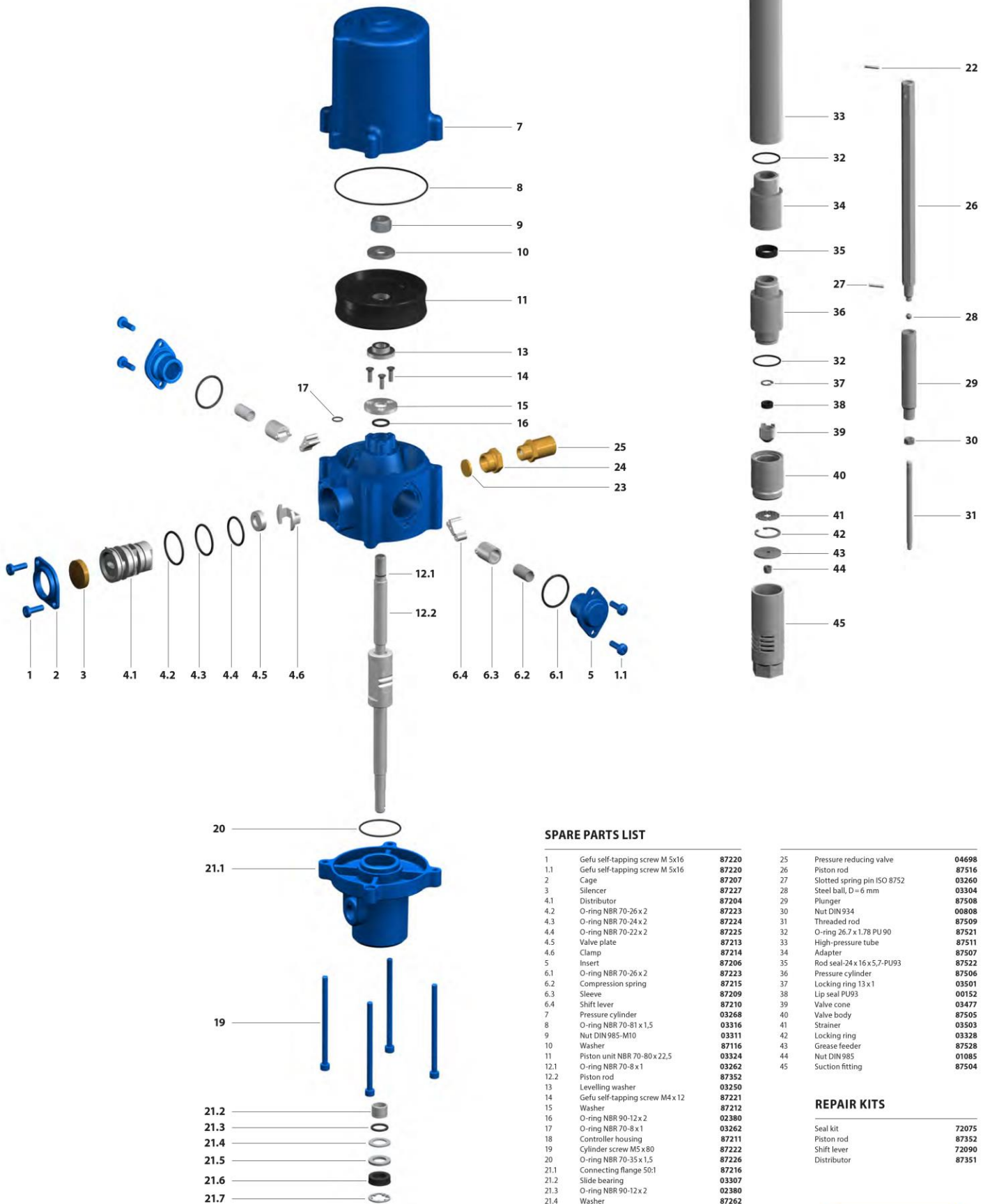


PNEUMATIC GREASE PUMP 50:1



SPARE PARTS LIST

1	Gefu self-tapping screw M 5x16	87220	25	Pressure reducing valve	04698
1.1	Gefu self-tapping screw M 5x16	87220	26	Piston rod	87516
2	Cage	87207	27	Slotted spring pin ISO 8752	03260
3	Silencer	87227	28	Steel ball, D=6 mm	03304
4.1	Distributor	87204	29	Plunger	87508
4.2	O-ring NBR 70-26 x 2	87223	30	Nut DIN 934	00808
4.3	O-ring NBR 70-24 x 2	87224	31	Threaded rod	87509
4.4	O-ring NBR 70-22 x 2	87225	32	O-ring 26,7 x 1,78 PU 90	87521
4.5	Valve plate	87213	33	High-pressure tube	87511
4.6	Clamp	87214	34	Adapter	87507
5	Insert	87206	35	Rod seal-24 x 16 x 5,7-PU93	87522
6.1	O-ring NBR 70-26 x 2	87223	36	Pressure cylinder	87506
6.2	Compression spring	87215	37	Locking ring 13 x 1	03501
6.3	Sleeve	87209	38	Lip seal PU93	00152
6.4	Shift lever	87210	39	Valve cone	03477
7	Pressure cylinder	03268	40	Valve body	87505
8	O-ring NBR 70-81 x 1,5	03316	41	Strainer	03503
9	Nut DIN 985-M10	03311	42	Locking ring	03328
10	Washer	87116	43	Grease feeder	87528
11	Piston unit NBR 70-80 x 22,5	03324	44	Nut DIN 985	01085
12.1	O-ring NBR 70-8 x 1	03262	45	Suction fitting	87504
12.2	Piston rod	87352			
13	Levelling washer	03250			
14	Gefu self-tapping screw M4 x 12	87221			
15	Washer	87212			
16	O-ring NBR 90-12 x 2	02380			
17	O-ring NBR 70-8 x 1	03262			
18	Controller housing	87211			
19	Cylinder screw M5 x 80	87222			
20	O-ring NBR 70-35 x 1,5	87226			
21.1	Connecting flange 50:1	87216			
21.2	Slide bearing	03307			
21.3	O-ring NBR 90-12 x 2	02380			
21.4	Washer	87262			
21.5	Support washer	03292			
21.6	Lip seal PU 93 20 x 12 x 5,7 mm	03387			
21.7	Locking ring DIN 984-20 x 1	03264			
22	Slotted spring pin ISO 8752	03260			
23	Filter element	87228			
24	Reducer	20122			

REPAIR KITS

Seal kit	72075
Piston rod	87352
Shift lever	72090
Distributor	87351

