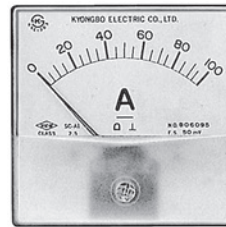


# 전류계 (Ammeter)



S TYPE

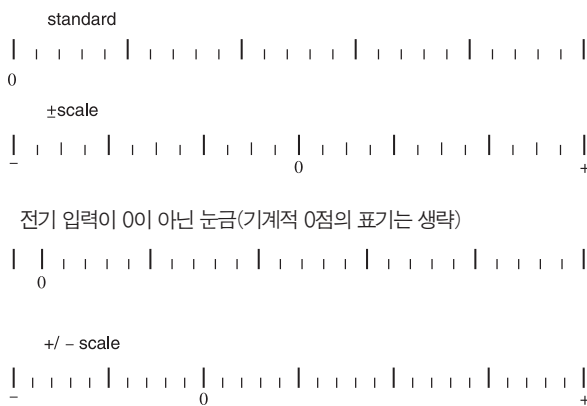


W TYPE

## 직류 전류계 ( DC Ammeter )

Type	Size (mm)	Scale Form	Input	Operating Principle	Accuracy Class(%)	Burden	Weight(g)	Dimension
SC - A1	80 × 80	Square (각형)	DC 50mV (option)		2.5	50mV Drop	≒ 200	276~277page 참조
SB - A1	100 × 84				1.5		≒ 220	
SA - A1	120 × 100						≒ 260	
WB - A1	80 × 80	Wide Angle (광각형)			1.5		≒ 320	
WA - A1	110 × 110						≒ 450	

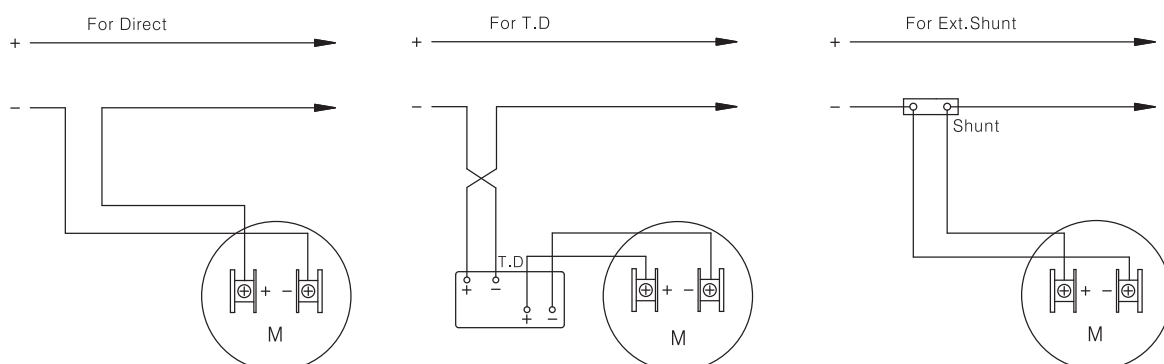
### Scale Form



### DC Input option

	Scale Value	Remark
직접연결 (Direct Connection)	200, 300, 500 (μA)	Internal Shunt
	1, 2, 5, 10, 20, 4~20, 50, 100, 200, 500 (mA)	
	1, 2, 5, 7.5, 10, 15, 20, 30 (A)	
50 또는 100mV	DC 5A~10000 A	External Shunt

## Connection Diagram



## ■ Description

30A 이상의 직류 전류계는 외부에 분류기(Shunt)를 연결하여 사용하십시오.

For higher ranges than 30A, use external shunt with the instrument.

분류기(Shunt)를 외부에 부착하여 사용할 경우 전류계의 Full Scale(50 또는 100mV)과 분류기의 2차 전압(50 또는 100mV)이 일치하는지 확인하여야 하며, 또한 전류계의 최대눈금치와 분류기의 1차 전류의 일치 여부도 확인하여야 합니다.

When DC Ammeter is used with a shunt, it is noted that a full scale and a terminal voltage(50 or 100mV) of the ammeter are same as the rated primary current and secondary voltage of the shunt respectively.

분류기(Shunt) 리드선의 전체 저항치는  $0.05\Omega$  이하이어야 합니다. 만약 분류기의 리드선의 전체 저항치가  $0.05\Omega$  이상일 경우에는 직류전류계의 감도를 조정할 수 있는 저항을 설치하여야 합니다.

Use any lead wire of which resistance is less than  $0.05\Omega$  in total. If the shunt lead resistance is indefinite, The meters may be set up with a available resistor for sensitivity adjustment.

분류기의 결선은 가능한 한 (-)측에 설치하여야 합니다. (외부 결선도 참조)

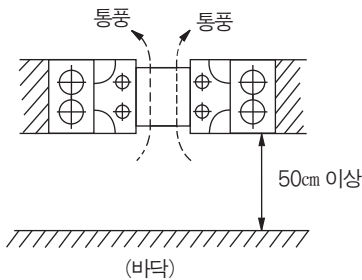
The shunt should be connected to the negative side line, if possible. (Refer to page 284)

배전반용 직류 전류계와 조합하여 사용할 경우 분류기의 계급은 0.5% 또는 1.0%의 분류기를 사용하십시오.

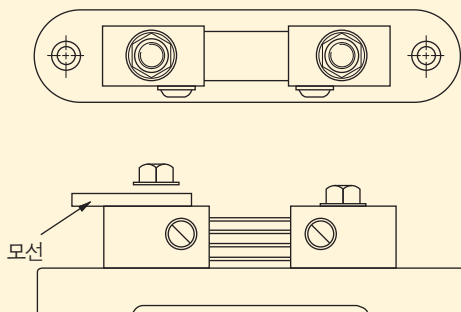
When the shunt is used with the panel-board meter. use the 0.5% class or 1.0% class of shunt.

분류기의 설치는 그림과 같이 설치하는 것이 바람직합니다.

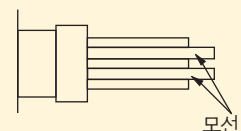
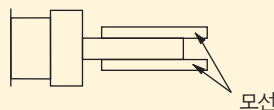
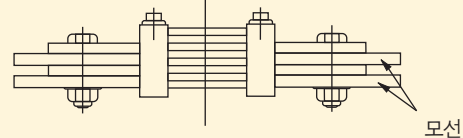
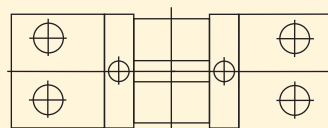
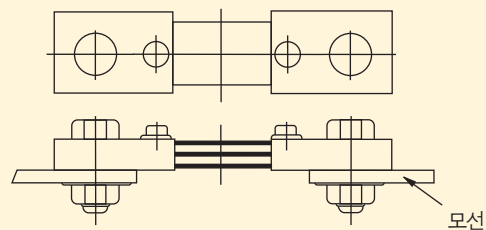
The shunt should be connected such as figure.



Shunt와 모선의 연결방식  
(Connection Method with Line)  
받침대가 있는 Shunt



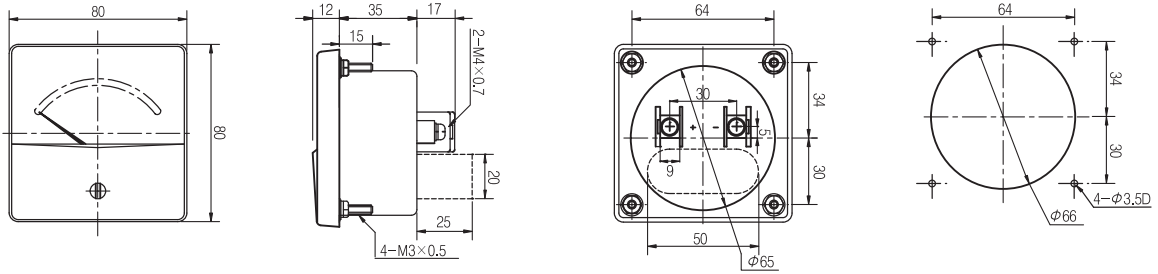
받침대가 없는 Shunt



## Dimension

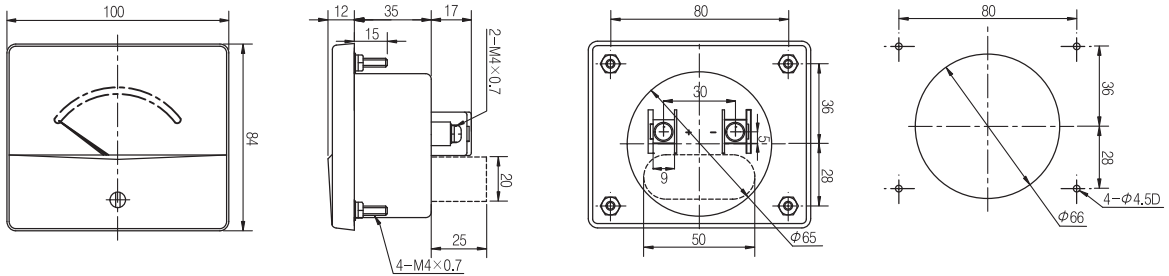
(unit : mm)

### ● SC Type



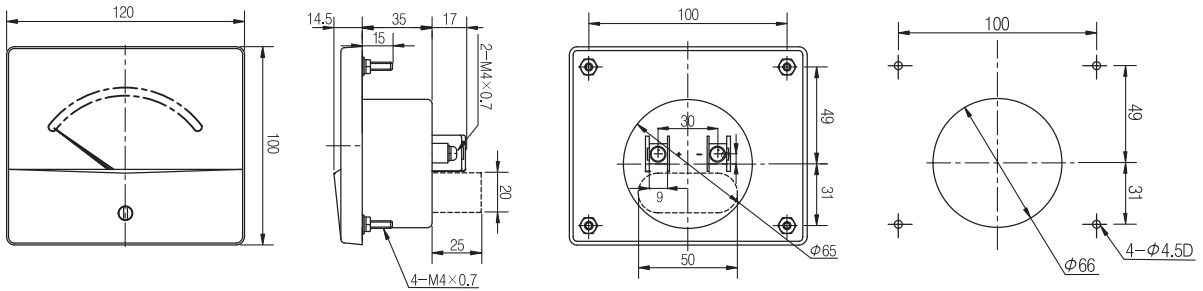
주) 점선부분은 주파수계에 한함.

### ● SB Type



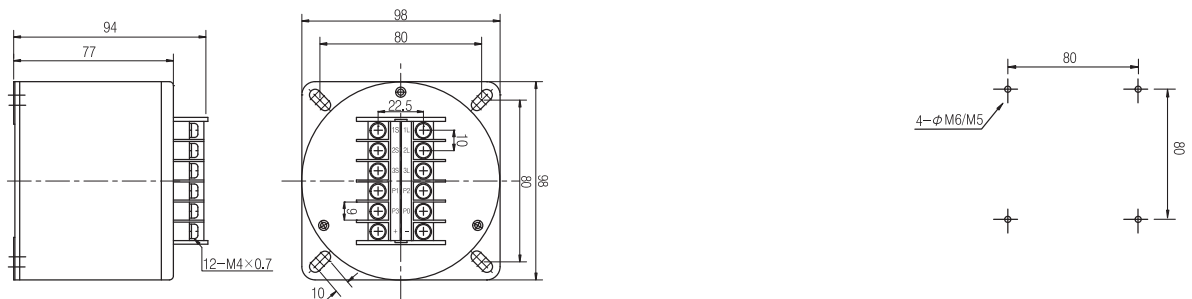
주) 점선부분은 주파수계에 한함.

### ● SA Type



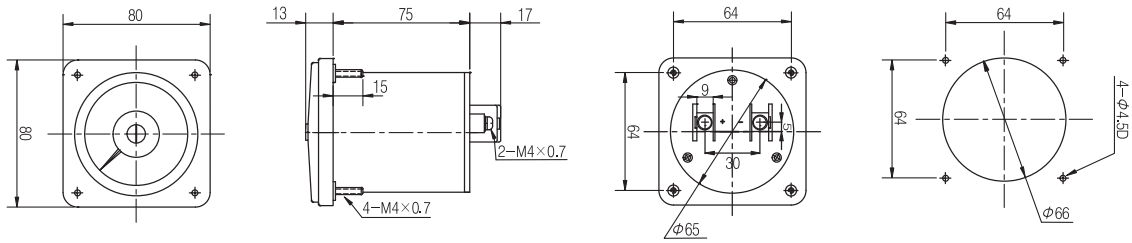
주) 점선부분은 주파수계에 한함.

### ● EXTERNAL TRANSDUCER(For meter)

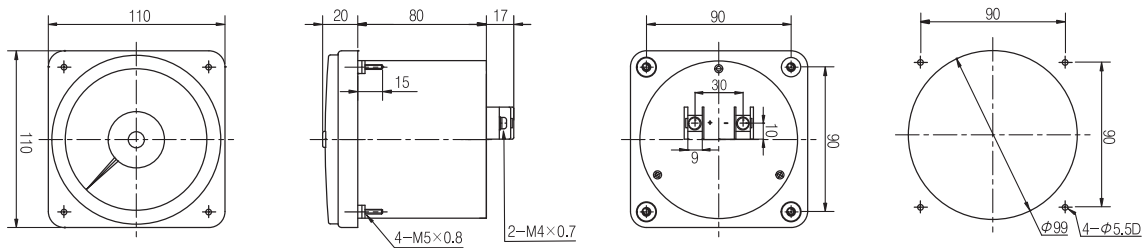


주) 단자수는 형식에 따라 다름(결선도 참고)

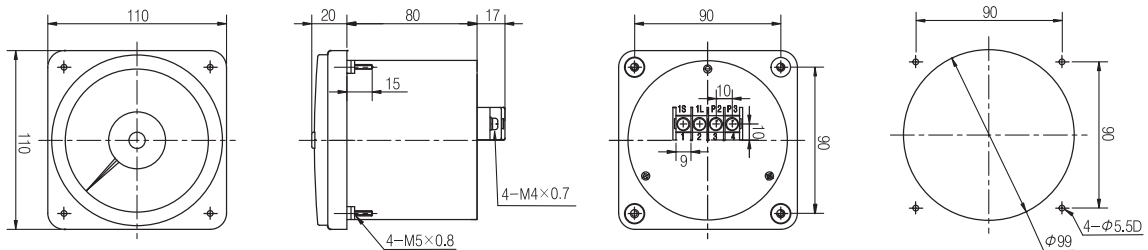
● WB Type(WB - A1, A2, V1, V2, H1)



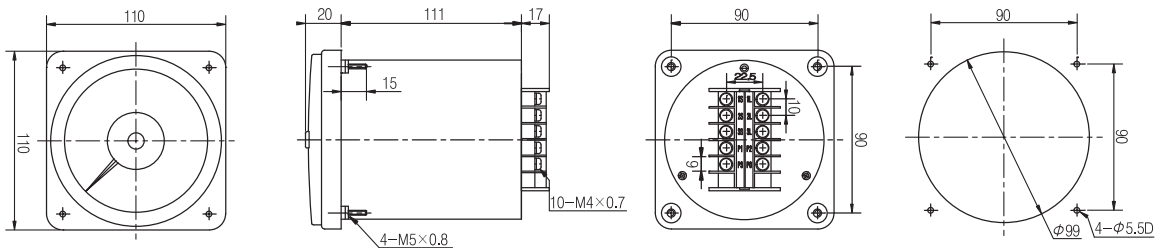
● WA Type



● WA - TP Type



● WA - TW4, TR4, UTW4, UTR4, UTP4, TP1, TW1 Type



주) 단 TW4, TR4는 PO단자가 없음

● WA - TW2, TR2, TP2, TW3, TR3, UTP3 Type

