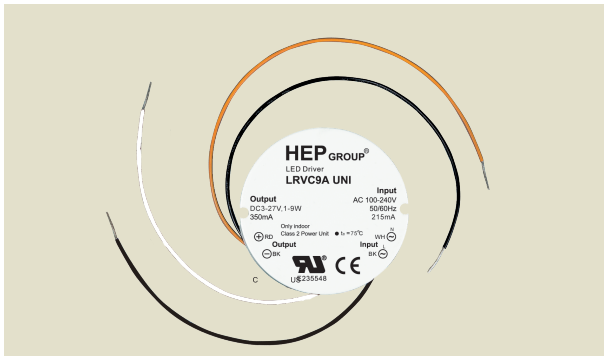


**100V-240V AC**



**Approval Marks**



**Electronic**

Parameter	Conditions	Min	Nom	Max	Unit
I/P Voltage Range		90	230	264	Vac
Input Frequency		47	50-60	63	Hz
Output Power(Pout)	350mA LED	1	1-9	10.8	W
Input Current(Iin)	25°C, Nominal Input@120VAC	-	215	-	mA
Output Voltage(Vout)		-	3-27	-	Vdc
Output Current(Iout)	25°C, Nominal Input	332	350	367	mA
Peak current		-	<500	-	mA
Power Factor	Full Load	-	0.40	-	
Protection	Overload Protection				
	Short Circuit Protection				
	Over Heat Protection				
Ambient Temp.		-20	-	+50	°C
Case Temp. (Tc)	Normal Conditions	-	-	+75	°C

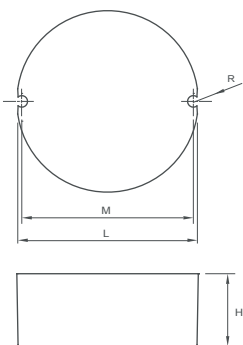
**Lamp Type** High Power LED 1.2W x 1~7

**Application Space**

Indoor/Outdoor Use  
(Low Humidity, No Condensation)

**Physical**

**Parameter**



L : 55 mm    H : 22 mm  
 M : 52 mm    K : mm  
 N : mm    R : 1.7 mm  
 W : mm

Tolerance :  $\geq 0 \sim 100 \geq +/-.5\text{mm}$   
 $100 \geq +/-.1 \text{ mm}$

Terminal Block : Hard Wires : Input : White / Black 149mm  
 Output : Red / Black 190mm

Housing Material : Polycarbonate / Potting

Label : Surface Print

Soldering : Lead-Free, Comply With RoHS

**Wiring Diagram**

