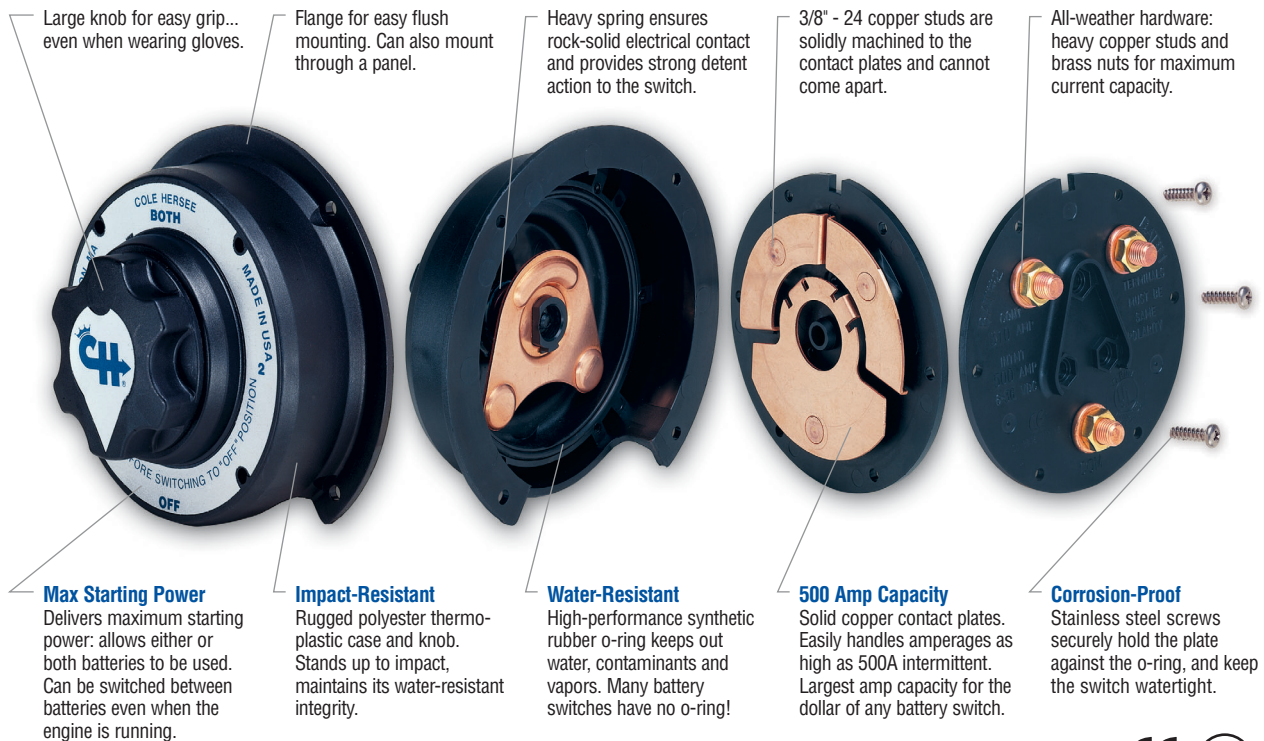


HOT FEED

Information on New Products from Cole Hersee Company

The Heavyweight: M-750 Battery Selector/Master Disconnect Switch



Features

- Provides the largest amp capacity for the dollar of any battery switch: 500A intermittent, 310A continuous, 6-36V DC.
- A complete series of switches, including the best-selling M-750 and others with enhanced features such as alternator field disconnect circuit.
- Provides a sure and reliable battery disconnection, protecting against electrical fire, tampering or theft, and battery drain.
- For any vehicle using two batteries, such as boats, emergency and rescue vehicles, trucks, RVs, buses, and utility trucks.

Specifications

- Vaporproof, water-resistant, dustproof and corrosion resistant.
- Ignition protected: conforms to USCG safety standard Section 183.410.
- UL and CE certified.
- Body diameter 5.00" (127.00mm), mounting flange diameter 6.00" (152.40mm), overall height 2.64" (67.31 mm). Three 3/8" - 24 copper studs.
- Functions either with alternators or generators.
- Make before break design permits operation through the On positions with the engine running.



Cole Hersee Co.

20 Old Colony Avenue, Boston, MA USA 02127-2467 • (617) 268-2100 • Fax (617) 268-9490
See our interactive product catalog at www.colehersee.com

The M-750 Series of Battery Selector/Disconnect Switches



M-750

M-751 with keys

MODEL	Lock*	AFD*	Pilots*	Pilot Circuit*
M-750				
M-751	✓			
M-752		✓		
M-753	✓	✓		
M-754				✓
M-754-01			✓	✓
M-755	✓			✓
M-755-01	✓		✓	✓

Lock: with key lock and two keys

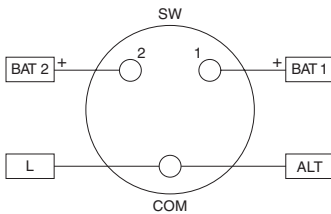
AFD: with Alternator Field Disconnect circuit

Pilots: with two pilot lights enclosed

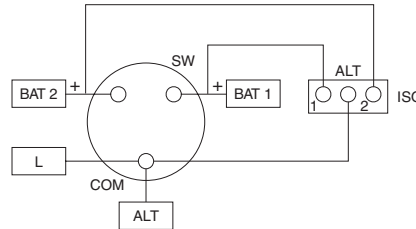
Pilot Circuit: Pilot indicator light circuit

Typical wiring diagrams for M-750 & M-751

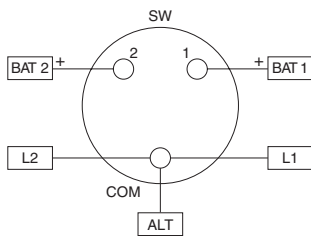
2 Batteries, 1 Switch, 1 Engine, 1 Alternator



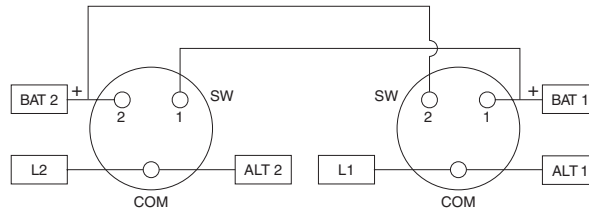
2 Batteries, 1 Switch, 1 Engine, 1 Alternator, with Battery Isolator



2 Batteries, 1 Switch, 2 Engines, 1 Alternator



2 Batteries, 2 Switches, 2 Engines, 2 Alternators



Key to the diagrams:

BAT1 = Battery 1 and common
BAT2 = Battery 2 and common
ISO = Battery isolator

COM = Common
SW = Switch
L = Starter & load

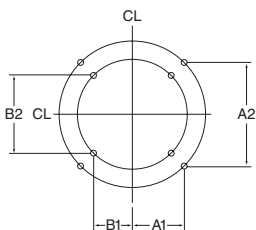
L1 = Starter No. 1 & load
L2 = Starter No. 2 & load
ALT = Alternator

BOTH = Common & both batteries

Mounting

M-750 series switches can be mounted flush or from behind, through a circular hole. When mounted flush, the switch covers over any holes previously made for other brands of battery selector switch.

When mounted from behind, No. 563 self-adhesive plastic sticker is available, which is identical to the ring-shaped sticker already on the switch.



Surface mounting

Drill four holes on a 5.500" diameter circle (139.7mm). Hole size 0.218" (5.53mm) diameter will accept No. 10 screws.

A1 = 1.944" (49.38mm)
 A2 = 3.888" (97.78mm)
 CL = Center line

Through panel mounting

Housing & knob clearance hole 3.312" diameter (84.12mm). Drill four holes on a 4.395" diameter circle (116.63mm). Hole size 0.201" (5.10mm) diameter, 0.5" (12.70mm) deep for 1/4" -20 bolts.

B1 = 1.553" (39.46mm)
 B2 = 3.107" (78.92mm)
 CL = Center line

Cole Hersee Co.

20 Old Colony Avenue, Boston, MA USA 02127-2467 • (617) 268-2100 • Fax (617) 268-9490
 See our interactive product catalog at www.colehersee.com

All specifications and information is subject to change without notice.