

Technical Data Sheet	MO39	Oil service
----------------------	-------------	-------------



Technical Data:

Air drive pressure:	1-10 bar / 14,5—145 psi
Calculated Outlet Pressure at an air drive of 10 bar/145 psi	390 bar/ 5,655 psi
Pressure ratio:	1:39
Displacement volume/double stroke	5.7 cm ³ / 0.34 cu.inch
Connections	
Hydraulic:	M30 x 1,5
Air drive	3/8 BSP
Maximum operating temperature	60 °C
Net weight	3 kg

Pressure and flow performances, please see enclosed graph.

MO39

single acting, single air drive head
(Standard= Bottom inlet)

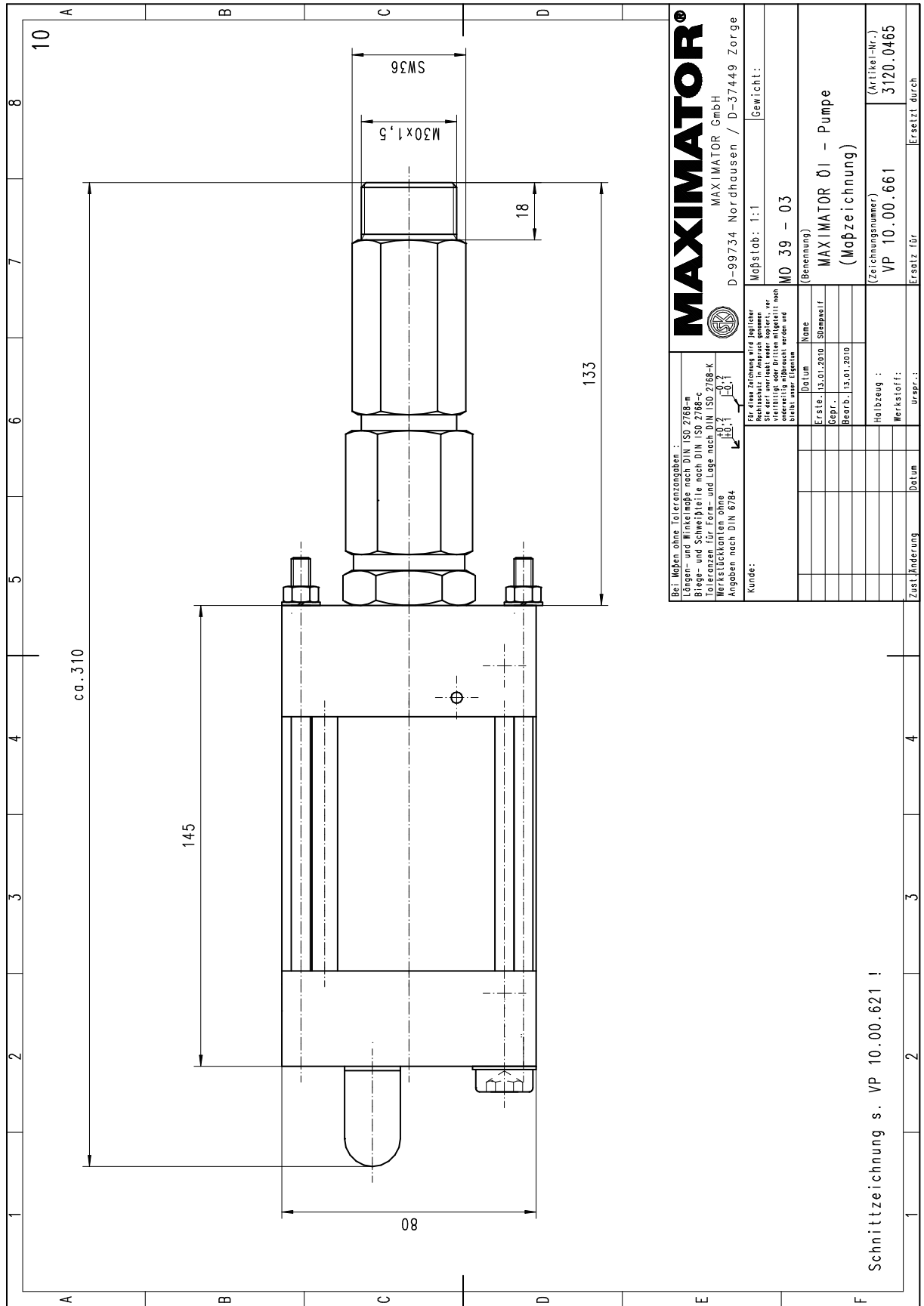
Material of construction:	Top cap	Aluminium
	Air cylinder	Aluminium
	seal package:	Polyurethane, Buna N
	Pump Body:	1.4305
	Piston	1.4112 (hardened)
Approximate Dimensions:	Height:	310 mm
	Depth:	80 mm
	Width:	80 mm
Available Accessories		
Air control units for M series with filter pressure regulator, control pressure gauge and shut off valve:	MO39 with C1	
To protect the pump against excessive outlet pressures or to limit the outlet pressure, a safety valve can be fitted to the air control unit in the air drive line:	MO39 with C1/SVair (The required outlet pressure has to be indicated.)	

Attantion!

This pump does not incorporates any inlet or outlet valves. The MO39 is designed as air motor for direct valve manifold installation.

Please consult factory for more information.

All technical and dimensional information subject to change. All General Terms and Conditions of sale, including limitations of our liability, apply to all products and services sold.





Leistungsdiagramm/Performance Graph MO 39

Prüfflüssigkeit/Test Liquid: Wasser-Öl-Emulsion/Water Oil Emulsion ca. 1 - 10 cst

